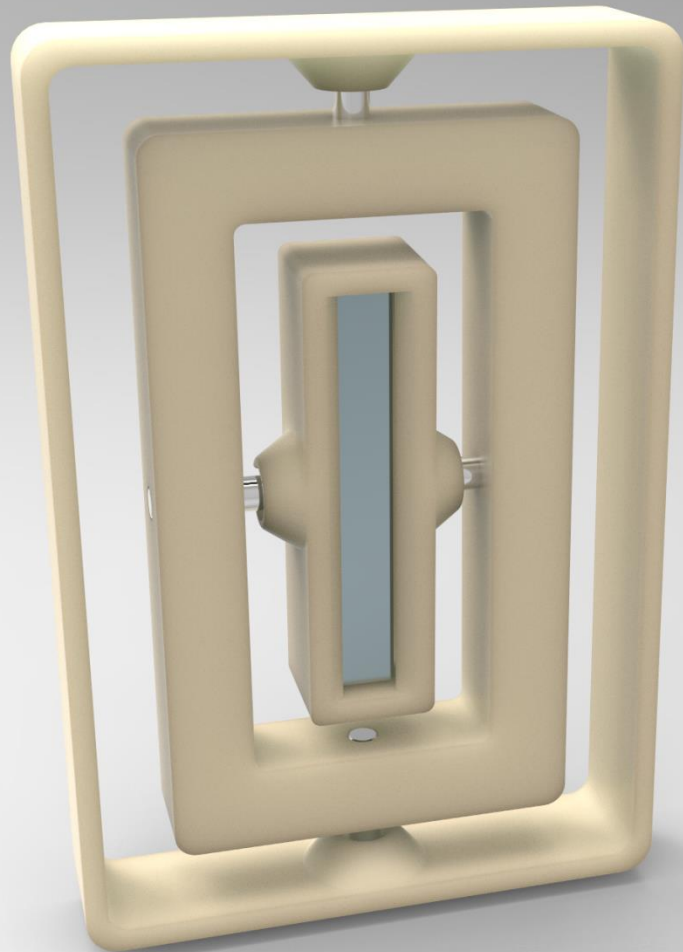
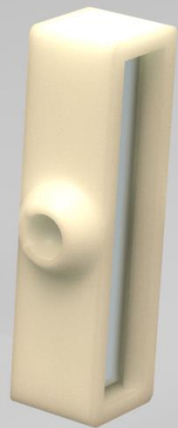
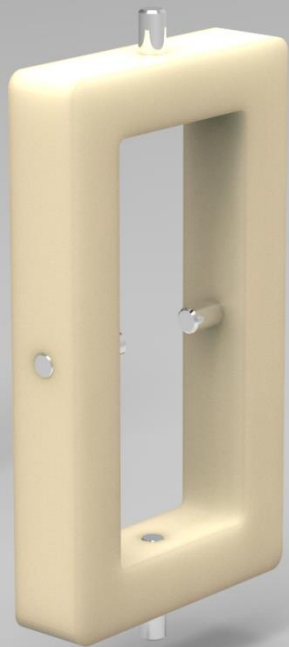
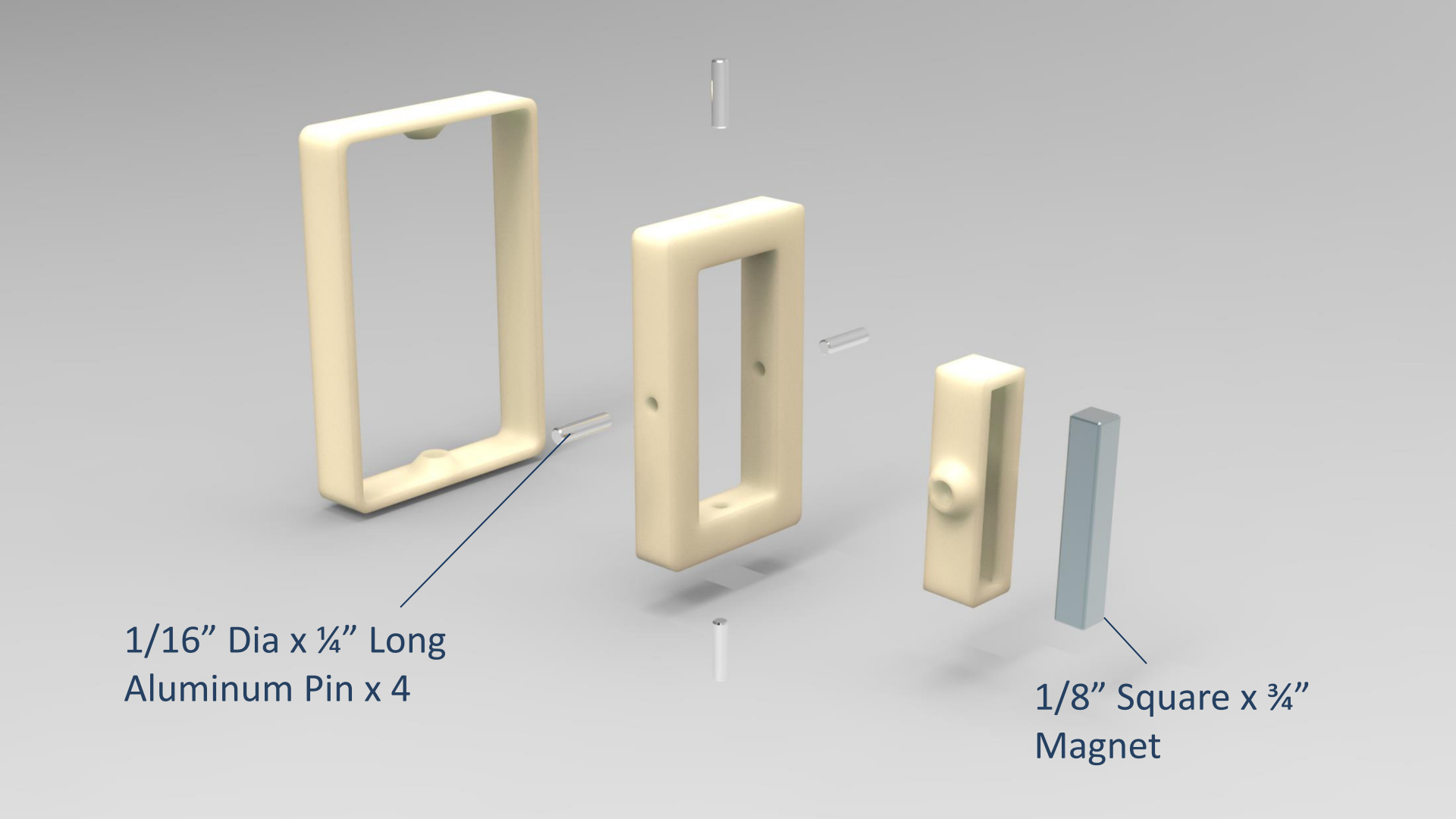


Magnetic Pole Detector







1/16" Dia x 1/4" Long
Aluminum Pin x 4

The image shows an exploded view of a mechanical assembly. It consists of two yellow plastic rectangular frames, one of which has a vertical slot. A smaller yellow plastic component with a circular protrusion fits into the slot. A blue square magnet is positioned to the right. Four small aluminum pins are shown: one is inserted into the bottom of the left frame, one into the right side of the middle frame, and two are positioned above and below the middle frame. A blue line points from the text label to one of the pins.

1/8" Square x 3/4"
Magnet