

# The Plague and the City in the Visual Arts

Veronica White

Curator of Academic Programs  
Princeton University Art Museum



Carlo Coppola, Italian, active ca. 1635–1672  
The Pestilence of 1656  
Oil on canvas  
76 x 99 cm (29 15/16 x 39 in.)  
frame: 98 x 119 x 4 cm (38 9/16 x 46 7/8 x 1 9/16 in.)

Museum purchase, Caroline G. Mather Fund  
y1963-36



Carlo Coppola, *Piazza del Mercato during the Plague of 1656*, ca. 1660,  
Museo di Sant Martino, Naples



Marcantonio Raimondi, *The Plague (Il Morbetto)*, engraving after Raphael, ca. 1515-1516



Nicolas Poussin, *The Plague at Ashdod*, ca. 1630,  
oil on canvas, Louvre





Gaetano Previati, Italian, 1852–1920  
The Monatti, illustration to Alessandro Manzoni's *I Promessi Sposi*  
ca. 1895–99  
Watercolor, heightened with white gouache, on light brown wove paper  
23.2 x 32.2 cm (9 1/8 x 12 11/16 in.)  
frame: 41.6 x 54.3 x 2.9 cm (16 3/8 x 21 3/8 x 1 1/8 in.)

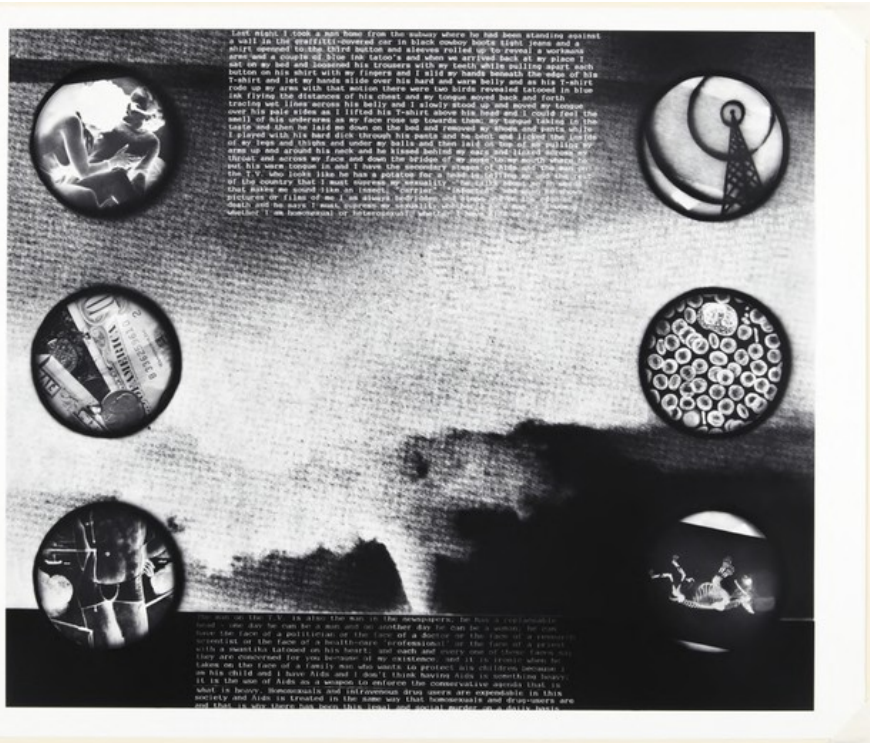
Museum purchase, Felton Gibbons Fund  
2007-16



Marcus Leatherdale, American, born Canada, born 1952  
AIDS  
1988  
Gelatin silver print  
image: 32.9 x 29.8 cm. (12 15/16 x 11 3/4 in.)  
sheet: 40.5 x 50.5 cm. (15 15/16 x 19 7/8 in.)

Gift of James Kraft, Class of 1957  
2006-423





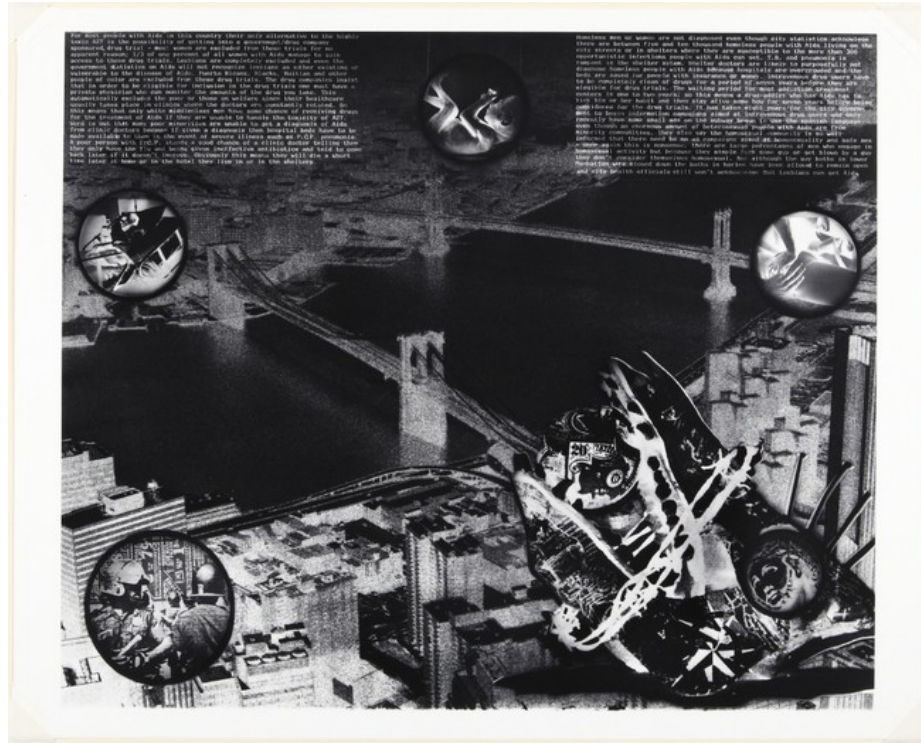
**DAVID WOJNAROWICZ**

American, 1954–1992

**Untitled**, from the **Sex Series**, 1989

Gelatin silver prints

Museum purchase, anonymous gift x1990-74; x1990-76





Mary Berridge, American, born 1964  
Patricia and Dawn and Friends from the series "A Positive Life: Portraits of Women Living with HIV"  
1996  
Chromogenic print  
image: 47.9 x 58.8 cm (18 7/8 x 23 1/8 in.)  
sheet: 50.7 x 60.8 cm (19 15/16 x 23 15/16 in.)

Museum purchase, gift of Merrill Lynch & Co., Inc.  
2001-150