



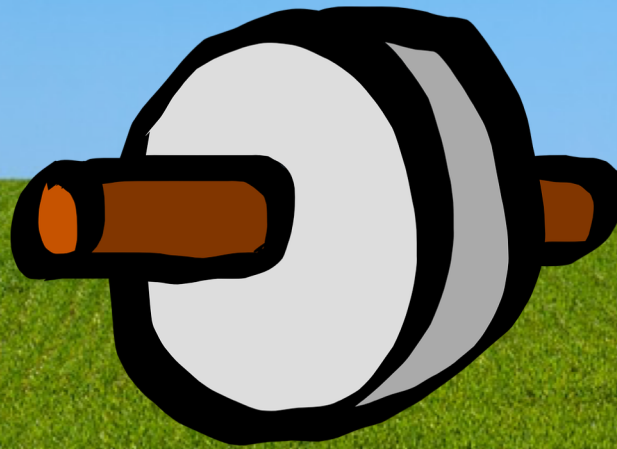
by Sydney and Rachel





what's a wheel

?????



Deconstruction

Tire removal

Brake pads

Spoke & nipples



Cleaning

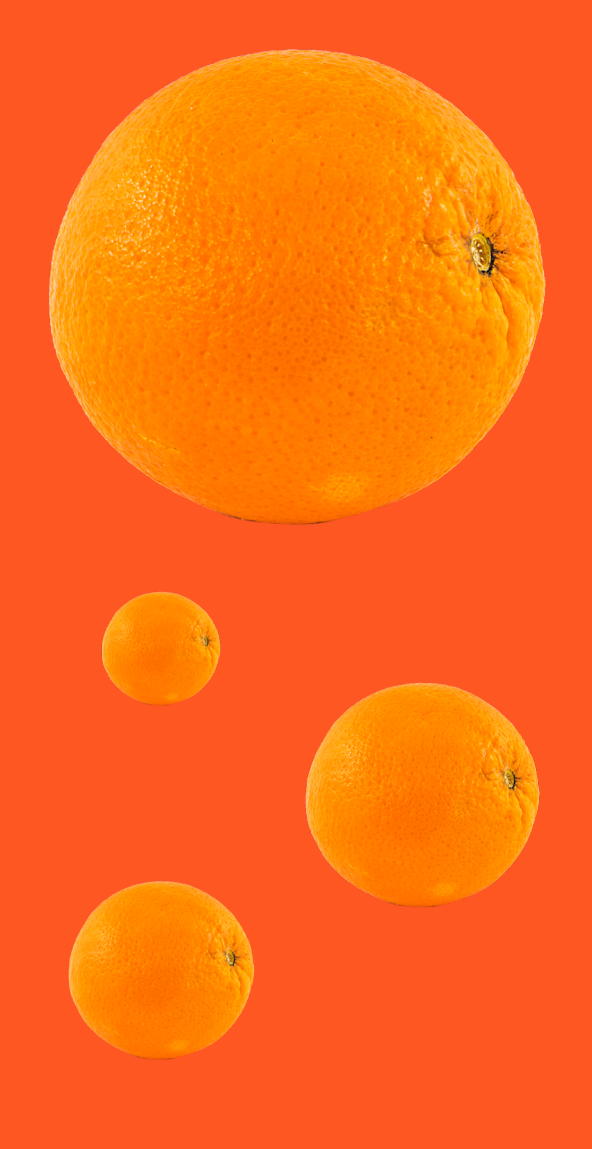
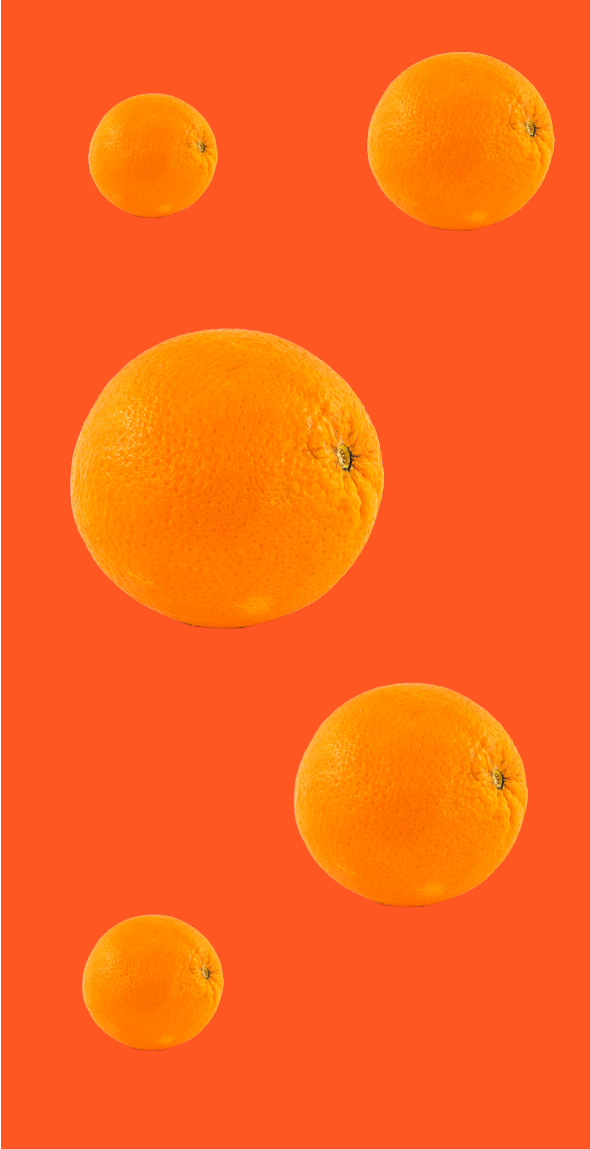
<3 repeat x10  range  il <3



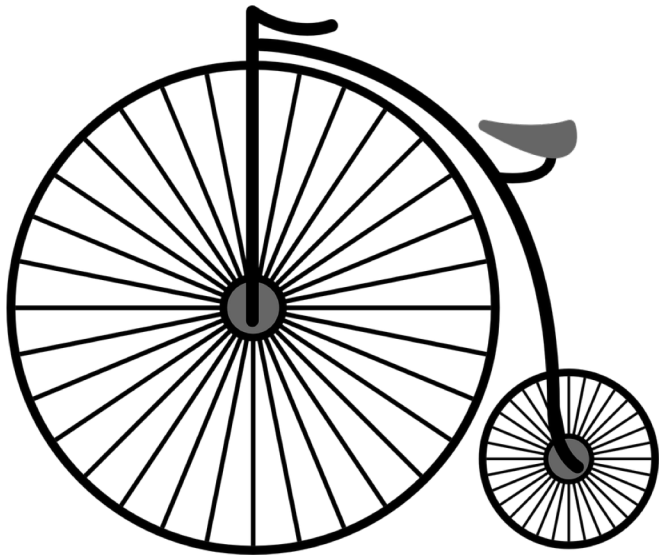
*remove
tire !!!*



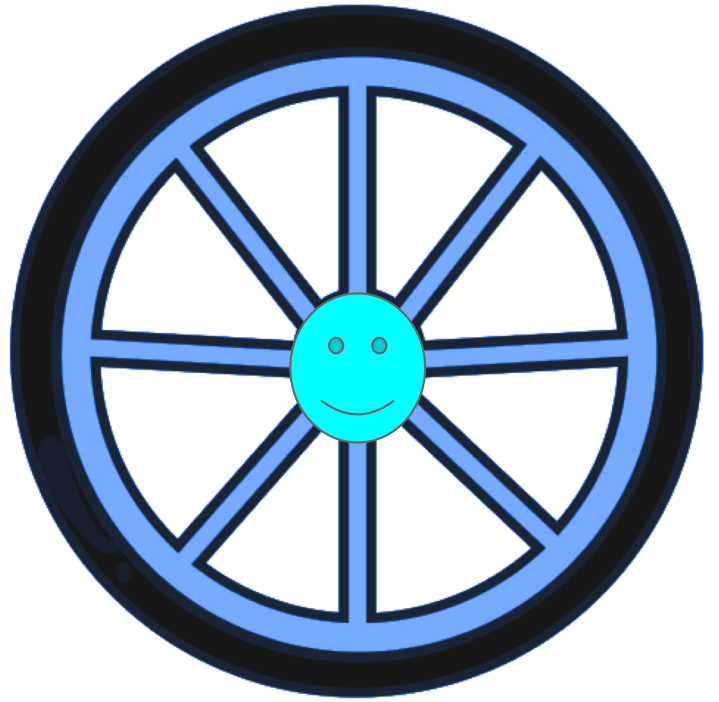
*brute
strength*



Rims. 



(Except without the spokes)

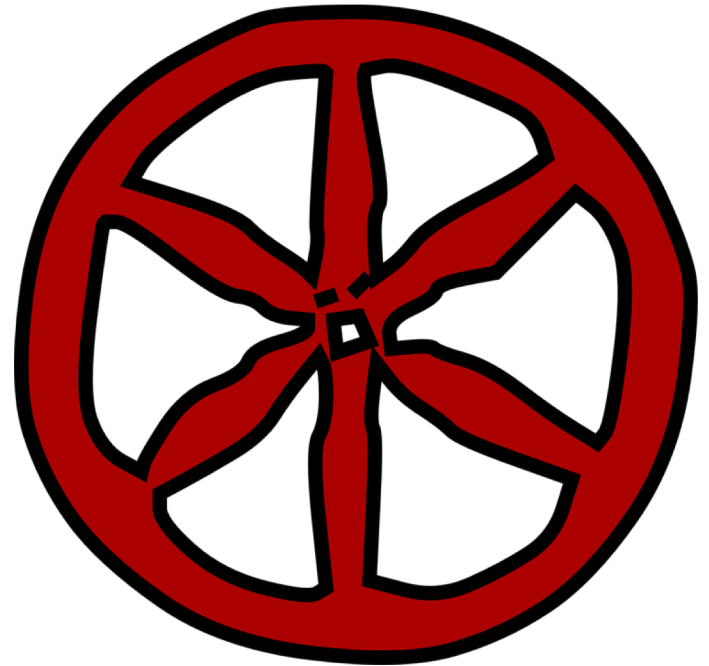


Hubs

- *Brake assembly*

spokes

- Why are they important?
- Suspension
- The process of truing a wheel



Tires (aka “tyres”)

- Proper P R E S S U R E
- bouncing



Mudguards

- What do they do?
- Cleaning the mudguards
-

f
i
x



d
e
n
t

RECONSTRUCTION!



v
r
o
O
M



v
r
o
O
M